

AYRESHIRE

**LOWEST Somatic Cell Count
Of ALL U.S. Dairy Breeds!**

(Source: U.S. Department of Agriculture)

Breeding For The Future



Type



Covey-Farms Retrace Rae

EX-92 2E

4-06 365D 30,282M (13,736kg) 4.4%F

Unanimous All-American, 2003

Grand Champion, 2003

World Dairy Expo

Her Daughter: VG-88

2-06 365D 32,707M (14,836kg) 1160F 932P

Net Merit



Palmyra L.H. Charm

EX-91

#6 on 8/04 Elite List

5-10 344D 30,080M (16,644kg) 1016F 893P

Sons in A.I.

Her Daughter: VG-87

1-11 318D 23,420M (10,623kg) 861F 716P



Mackayr Chelsey

EX-90 @ 5-00

Proj. over 22,000M (9,979kg)

Supreme Champion,

2004 IL State Fair



Covey-Farms Reno Rosy

EX-91

#33 on 8/04 Elite List

5-09 365D 38,930M 1228F 1127P

Daughter #14 on 8/04 Elite List

Sons in A.I.

Her Daughter: EX-90

#14 on 8/04 Elite List

3-03 305D 26,350M (11,952kg) 1018F 817P

Longevity

Adaptable

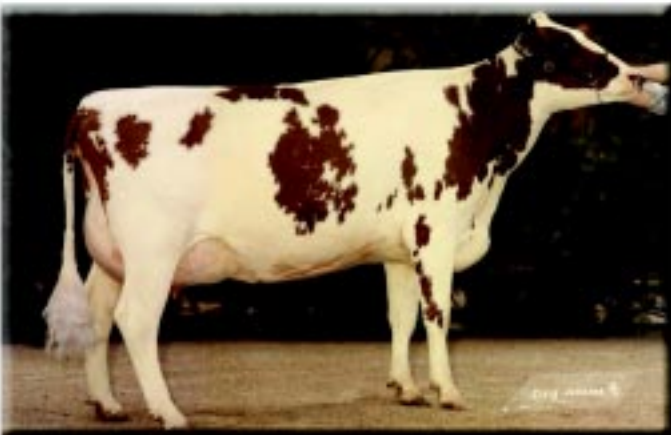


Sunny-Acres Soldier Polly

EX-91 2E

2-08 365D 22,040M (9,952kg) 3.3%F 3.3%P
 4-00 302D 26,750M (12,079kg) 3.3%F 3.3%P
 5-00 338D 30,790M (13,903kg) 3.1%F 3.2%P
 6-01 365D 34,080M (15,389kg) 3.3%F 3.0%P

*Reserve Grand Champion,
 2003 Mid-Atlantic National Show*



Hawksfield Bronara

EX-92 2E

3-03 365D 20,774M (9,380kg) 5.4%F 3.8%P
 4-03 365D 25,511M (11,519kg) 4.6%F 3.7%P
 6-04 341D 24,660M (11,135kg) 4.5%F 3.0%P
 7-03 365D 30,408M (13,763kg) 3.6%F 3.0%P

*6th Generation Excellent!
 Sire: Desblay Rebel Willy*





*The
Right
Choice*



Somatic Cell Comparisons

Source: USDA

	Elite Cows PTA SCS	Active A.I. Bulls PTA SCS
Ayrshire	2.91	2.92
Brown Swiss	3.04	2.97
Guernsey	3.21	3.27
Holstein	3.09	3.10
Jersey	3.30	3.27
Milking Shorthorn	3.04	3.02
Red & White	3.10	3.06



AYRSHIRE BREEDERS' ASSOCIATION

A member of the U.S. Livestock Genetics Export

1224 Alton Darby Creek Rd., Suite B

Columbus, Ohio 43228

(614) 335-0020 - Fax (614) 335-0023

E-mail: info@usayrshire.com - www.usayrshire.com