

PENNSYLVANIA

***Welcomes you to the
130th National Ayrshire Convention & Sale***



***June 21-25, 2005
Myerstown, PA***



Dairy Checkoff

Working for YOU!



Nearly 20,000 McDonald's® and Wendy's® restaurants across the country now offer kid-friendly milk packaged in plastic, resealable containers. These chains are investing tens of millions of dollars to promote milk.



More than 2.5 billion quarts of milk, cheese and yogurt packaged feature the 3-A-Day of Dairy logo directly in the dairy case, reminding the public to consume at least three servings of milk, cheese or yogurt each day.



3-A-Day of Dairy weight loss campaign helps to increase public awareness of dairy's role in weight loss and weight management.

Dairy checkoff works!

New Look of School Milk

Through the dairy checkoff's New Look of School Milk program, more than 1,250 schools representing nearly 900,000 students now offer single-serve milk in plastic resealable containers on the school meal line, leading to nearly 5 million incremental gallons of milk sold.

MILK:
THE POWER
BEHIND THE PLAY

To enhance retail and school marketing efforts, dairy producers are teaming with the NFL to help educate kids on the importance of healthy eating, including three servings of dairy a day, along with daily physical activity.

Building demand for milk and dairy products!

www.dairycheckoff.com

Dairy Management Inc.
Pennsylvania Dairy Promotion Program
American Dairy Association & Dairy Council Mid East
Mid-Atlantic Dairy Association



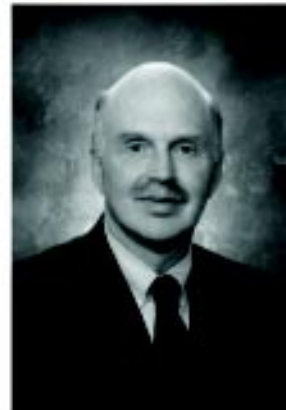
Pennsylvania Department of
AGRICULTURE

June 21, 2005

Dear Friends:

On behalf of the Pennsylvania Department of Agriculture, it is my pleasure to welcome the 2005 National Ayrshire Convention to Pennsylvania.

The dairy industry is an important part of Pennsylvania's economy, making up 40 percent of our agricultural industry and providing nearly 40,000 jobs. Our 560,000 dairy cows produce 10 billion pounds of milk annually—ranking us fourth nationally for milk production and generating \$1.7 billion in cash receipts. Pennsylvania is also a leading producer of ice cream, butter, cheeses, and milk sherbet, ranking in the top ten nationally for each product.



We are proud of our dairy industry in Pennsylvania. Last year, we created the Center for Dairy Excellence to help producers increase profits, while improving farm management and performance. Through the Center's efforts, we can remain successful by ensuring a competitive and profitable dairy industry long into the future.

I hope you enjoy your stay in Pennsylvania, and wish you a wonderful convention.

Sincerely,

A handwritten signature in cursive script that reads "D Wolff".

Dennis C Wolff

The Majority Leader

48TH DISTRICT
DAVID J. BRIGHTBILL

SENATE BOX 203048
THE STATE CAPITOL
HARRISBURG, PA 17120-3048
717-787-5708
FAX: 717-787-3455
TOLL FREE: 800-222-1897

COMMITTEES
RULES, CHAIRMAN
APPROPRIATIONS



Senate of Pennsylvania

February 28, 2005

Greetings!

Lebanon County is an area rich in agricultural history, particularly in cattle and dairy production. We are honored to host the 2005 National Ayrshire Convention and we hope you enjoy your visit here.

More than 250 years ago, the original German settlers tilled this valley's fertile soil, creating an economic base that continues today and blends with the residential, commercial and industrial development. One of the best symbols of our history of dairy production is Hershey's Chocolate. Milton Hershey established his chocolate factory nearby so he could obtain the large supplies of fresh milk needed to produce milk chocolate. Along with our continued dairy production, Lebanon County is well-known for its poultry operations and pork products, especially Lebanon Bologna.

The people of this area have a great appreciation for our farmers and farm families and the contributions they make to our economy and overall way of life. Faced with an extremely competitive world marketplace, Pennsylvania continues to thrive as an agricultural leader because of the dedication and hard work of our agricultural community.

It is my hope that in your stay with us you can come to appreciate the beautiful farmland and Pennsylvania Dutch culture that makes this area so special. Best wishes for a rewarding and enjoyable convention!

Very truly yours,

A handwritten signature in cursive script that reads "David J. Brightbill".

David J. Brightbill
Majority Leader, Senate of Pennsylvania

As state representative of Pennsylvania's 13th Legislative District, I would like to welcome members of the National Ayrshire Association to our great Commonwealth! Pennsylvania has many attributes, from lush green forests and picturesque mountain ranges to bustling cities and quaint historic towns, that I hope you have a chance to see during your visit. Chester County, especially, has many acres of rich farmland and beautiful herds of Ayrshires. I hope you enjoy your time in the state where America began.

State Rep. Art Hershey



ARTHUR D. HERSHEY
MEMBER, 13TH DISTRICT
HOUSE OF REPRESENTATIVES
COMMONWEALTH OF PENNSYLVANIA

RT. 10 and OLD RT. 41
3157 LIMESTONE ROAD, SUITE 2
P.O. BOX 69
COCHRANVILLE, PA 19330
PHONE: (610) 593-6565

HARRISBURG OFFICE:
HOUSE BOX 200020
MAIN CAPITOL BUILDING
HARRISBURG, PA 17129-2020
PHONE: (717) 783-6435

Welcome *Ayrshire* Breeders,

On behalf of the Pennsylvania *Ayrshire* Breeders' Association, I would like to cordially welcome you to the 130th Annual Meeting Convention and Sale.

Pennsylvania *Ayrshire* Breeders are proud to be hosting you at this year's convention. Pennsylvania has a long history of many famous herds. One that has stood out is the famous Ardrossan herd. Hope Montgomery Scott was the lady in charge of that great herd for many years. Although the herd has been gone for 10 years now, Ardrossan continues still to influence the breed today through bulls like Trident and his sons. There are daughters all over the world that carry on the Ardrossan breeding. And then there's Ardrossan Classic Pearlina who has been a lifetime production leader at 300,000 lbs. Other noteworthy herds from Pennsylvania's past are the Barclay herd that had the first *Ayrshire* to produce over 200,000 lbs of milk. Pennhurst Farms, famous for sires like Man O' War and Pennhurst Advancer, Masonic Homes Farm, Sycamore Farm, Neshaminy and many others have helped shape the history of the *Ayrshire* breed.

It's been a long tradition of breeding, raising, milking, buying and selling *Ayrshire* cattle of top quality that Pennsylvania *Ayrshire* Breeders take pride in. We are proud to be as much a part of that tradition today as all the great breeders were in the past.

At this time, we would like to thank everyone who contributed and helped in the planning and organizing of this 130th Convention. Also thanks to all you fellow *Ayrshire* Breeders who have come together to join us in 'Celebration' of this great *Ayrshire* cow we all regard so highly. Please enjoy your stay with us this week; we are so glad you have come to visit.

Sincerely,
Bonnie Wentworth
Convention Chairperson

The Pennsylvania Ayrshire Breeders Association would like to thank our sponsors for the financial assistance. All sponsors as of April 18th are being listed here and any additional sponsorships we receive will be recognized at the 130th National Ayrshire Convention!

Platinum

The Mid-Atlantic Dairy Association
 The Pennsylvania Dairy Promotion Program
 The American Dairy Association & Dairy Council Mid East
 Dairy Management, Inc.
 All-American Dairy Show

Gold

PA Dairymen's Association
 Accelerated Genetics
 Cargill Animal Nutrition
 Dairy Farmers of America
 Elanco Animal Health
 IBA Inc. / Dair-E-Ag IBA
 PA Department of Agriculture
 Ohio Ayrshire Breeders' Association

Silver

F.M.Brown's Sons Inc.
 Iowa Ayrshire Association
 Kathleen E. Barry, Nationwide Insurance & Financial Services
 Mark Hershey Feeds
 Northeast Ayrshire Promotions
 Penn State Dairy Science
 Pennfield Corporation
 Red Dale Ag Service
 Vermont Ayrshire Club, Inc.

Bronze

ABS
 Blue Seal
 Renaissance Nutrition, Inc.
 Swiss Premium Dairy / Wengert's Dairy
 Annville-Cleona Veterinary Assoc., Inc.
 Bernard C. Morrissey Insurance, Inc.
 Binkley & Hurst Bros.
 DairyLea
 First Citizens National Bank, Troy, PA
 Genex Cooperative Inc. / C.R.I.
 Hostetter Sales & Service, Inc.
 Land O'Lakes Animal Milk Products Co.
 Lira Animal Health Products

Bronze

Maryland & Virginia Milk Producers
 Northeast Ag Choice Farm Credit
 Pioneer Hi-Bred Intl., Inc.
 Richard N. Mellinger
 Rufus Brubaker Refrigeration LLC
 Select Sire Power / Select Sires
 Semex USA
 Senator David J. Brightbill
 Taurus Service, Inc.
 Weaver's Toasted Grains
 Willow Creek Animal Hospital

Friend of the Ayrshire Breed

Dairy One
 Hy-Point Farms
 Lebanon Valley Farmers Bank / Fulton Bank
 Adams Bros. General Contractors
 Lancaster DHIA
 American Farm Products Inc.
 Cornerstone Genetics/Larry J Kennel, DVM
 Dick & Brian Kreider, Pioneer Brand Products
 Douglas C. Wallick Insurance
 Ephrata National Bank
 Harry H. Bachman, Auctioneer
 Rep. Arthur D. Hershey
 Richard Smith, Sr & Cynthia Crispin Smith
 Wisonsin Ayrshire Breeders' Association

Ayrshire Breeders

Kingswood Farm
 Hoppaugh Farms
 Timberlawn Farm
 Covey Farms – Stan & Barbara Covey
 Dreamnol Ayrshires
 Haynes Farm
 Crown Quest Ayrshires
 Good-Vue Ayr Farms
 Litzenberg Farms
 Mackinson Dairy Farm
 Maulfair Acres
 Wentworth Farm





WELCOMES THE NATIONAL AYRSHIRE BREEDERS CONVENTION

AT F.M. BROWN'S SONS, INC. SUCCESSFUL CUSTOMERS
ARE OUR BEST ADVERTISEMENTS

EUREKA AYRONO FARMS

ED & HAROLD KULP - POTTSTOWN, PA
RHA - 13,401 Milk - 463 Fat - 427 Protein



CONGRATULATIONS ON A SUCCESSFUL CONVENTION

MIKE ZOOK & FAMILY

HONEY BROOK, PA
RHA - 14297 Milk - 534 Fat - 427 Protein



KING & QUEEN FARMS

TOM & DALE SMITH - DENVER, PA
RHA - 17,927 Milk - 705 Fat - 601 Protein



Betty 2yr 2 Mo -19,722 Milk - 796 Fat - 660 Protein



F.M. BROWN'S SONS, INC.
Manufacturing Livestock Feeds Since 1871



FLEETWOOD, PA
610 - 944 - 7654

BIRDSBORO, PA
610 - 582 - 2741

SINKING SPRING, PA
610 - 678 - 4567



Congratulations, Pennsylvania Ayrshire Breeders, on hosting a great convention.

We're looking forward to welcoming everyone to Ohio next year, June 20-24 in Wooster.

Come join us in Ohio!

UPCOMING OHIO EVENTS

July 10, 2005	Ohio Summer Picnic	Bradner, OH
August 4, 2005	Ohio State Fair Jr. Ayrshire Show	Columbus, OH
August 6, 2005	Ohio State Fair Ayrshire Show	Columbus, OH
November 26, 2005	29th Ohio National Fall Sale	Wooster, OH
February 25, 2006	Ohio Annual Meeting & Banquet	Plain City, OH
March 30-April 1, 2006	Spring Dairy Expo 2006	Columbus, OH
March 30, 2006	Ohio Ayrshire Spring Expo Sale	Columbus, OH
March 31, 2006	National Ayrshire Spring Show	Columbus, OH

Ohio Ayrshire Breeders' Association

Marilyn Litzenberg, Secretary/Treasurer, 8228 Bishop Road, Centerburg, OH 43011 • Phone/Fax: 740-625-5366

Covey Farms

Stan & Barbara Covey, Owners

11511 E 588, Rose, OK 74364

Phone: 918-479-8501

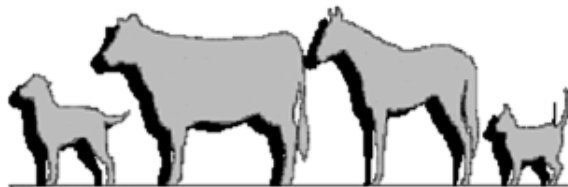
"Covey Farm's highest indexed cow"



COVEY FARMS FOREVER JADE (EX 90)

365d 31,375M 1038F 909P

Embryos are available for sale.



WILLOW CREEK
ANIMAL HOSPITAL

5707 Leesport Avenue
Reading, PA 19605-9799

♥ 24 HOUR SERVICE ♥ 610-378-0192 * 717-866-7522

The Willow Creek Animal Hospital was established in 1977 to serve Reading, Pennsylvania and surrounding areas. The veterinarians and staff are dedicated to providing the highest quality veterinary and surgical care for your animals.

Mackinson Dairy Farm

**Donald & Rita
Mary, Matt, David**

17427 E. 2125 N. Rd.
Pontiac, IL 61764
(815) 842-2692

Website: www.mackinsondairy.com

Home of Registered Ayrshires & Holsteins
Mackinson Kellybuck Roxie
1st place Sr. 2 (junior & open)
2005 National Spring Show
Columbus, OH

LIRA Gold

**Proud sponsor of the
2005 National Ayrshire
Convention**



**Proven Direct
Fed Microbials,
Live Yeast &
Enzymes**

**The complete microbial package
designed to increase digestibility
and feed utilization of dairy rations
MORE MILK = MORE PROFIT**

LIRA Animal Health Products

A division of **Kauffman's Animal Health Inc.**
21 Keystone Drive • Lebanon, PA 17042 • Fax: 717-274-3525

800-992-3147



info@ka-hi.com

WWW.LIRAGOLD.COM

The Keenan^{SYSTEM}



The Keenan System Provides:

- On Farm Commissioning**
- Ongoing Farm Visits**
- Performance Monitoring**
- Feedline Telephone Advisory Service**

**Bring the Keenan System to your dairy!
Call today! 1-800-414-4705**

**BINKLEY & HURST
BROS. INC.**

133 Rothsville Station Rd, Lititz, PA

THE NOLAN FAMILY
Welcomes you to Pennsylvania



DREAMNOL AYRSHIRES

Rob & Sharon
Brian, Becky

Craig & Jenny
Katelyn, Lainey

Kevin & Emily
Colton, Dalton, Luke

34 Shapansky Rd., Cochranville, PA 19330
(610) 593-7465

PA Dairymen's Association

**Congratulations to PA Ayrshire Breeders Association
and best wishes for a successful convention!**

David R. Smith – Executive Secretary

440 Plaza Drive
Palmyra, PA 17078

Phone: 717-838-3283

Email: guerndrs@verizon.net

Timberlawn Farm

WELCOMES YOU TO PENNSYLVANIA

Our story begins with a quote in the May 1930 issue of the Ayrshire Digest.

“Ray C. Norman of Street, Maryland, believes in starting new foundation herds of Ayrshires. Ray has sold a male and four females to George Laffey of West Chester, Pennsylvania.”

George Laffey is the founder of our Ayrshire legacy at Timberlawn. Prior to 1929, herds were being destroyed by tuberculosis including one owned by George. The Ayrshire Breed was the first to require disease free state certificates for the sale of any registered animals. Pennsylvania had established this precedent under the leadership of Dr. E.C. Deubler.

George and his daughter, Ann learned from these great pioneers of the breed. They purchased animals from Penshurst, Sycamore, Delchester, Masonic Homes and Strathglass. By 1941, Ann had developed her own herd of Ayrshires. In the 1960's, Lippitt Roger was purchased to improve several promising cow families.



Our favorite is **TIMBERLAWN JACQUE'S IRISH ROSE**

BORN: 7/14/1985 Deceased in 2000

Sire: Timberlawn Roger's Jacque

Dam: Blue Meadows Irish Rose

Ann's children, Susan, Barbara, Charles, Judy and Ellen continue to promote the Ayrshire Breed. We are pleased to welcome grand-daughter Jen McHone's new husband, Wade Brunsman to our family. Wade and Jen have recently started their own Ayrshire herd, Brone-Ayr Ayrshires. Though the Philadelphia area continues to encroach, Timberlawn Farm has prevailed.



BARBARA YOUNG RUDY

ANN LAFFEY YOUNG

SUSAN YOUNG EDWARDS

**TIMBERLAWN FARM
WEST GROVE, PA. 19390**

IN MEMORY OF TOM WHITTAKER

Hoppaugh Farms

Stop by Anytime



Home of Lone-Elm Tuxedo Valoree
Reserve Supreme Champion
Troy Fair – 2004
& much more

Lone-Elm Ayrshires

Bradford County

Ray & Joann Hoppaugh
R.D.#2, Box 165,
Columbia Cross Roads, PA 16914

Dan, Kim, Paige & Danny, Jr.
Phone: (570) 596-2532
Fax: (570) 596-3538
E-mail: rhoppaugh@pennfield.com

Penn State Dairy Science

- Award winning faculty, advisors and teachers**
- Options for Major**
 - Business/Management
 - Science
- Career Opportunities**
 - Personalized career guidance and placement
 - Preparation for veterinary/professional school
 - Internship program
- Student Development**
 - Research opportunities in nutrition, physiology, and management
 - International travel
- Scholarships**
 - \$1.5 million in College of Agricultural Sciences
 - \$75,000 in Dairy & Animal Science
- Dairy Science Club**
 - Nationally recognized by American Dairy Science Assoc. for excellence
 - Recent trips to California, Washington, Ireland, Arizona, Argentina, Texas
- Dairy Cattle Judging Team**
 - Top 5 nationally in 2002 & 2003

For more information, contact the Department of Dairy & Animal Science • 324 Henning Bldg. • University Park, PA 16802 • 814-863-3664 • www.das.psu.edu • Jana Peters, Advising Coordinator • jpeters@psu.edu

Congratulations
 to the
Pennsylvania Ayrshire Breeders Association
 on hosting the 2005 National Ayrshire Convention
 from the
VERMONT AYRSHIRE CLUB, INC.
 Trustees: Linwood Huntington, Pres., (802) 866-5438; Lori Before, Vice-Pres., (802) 334-8198;
 Leo Shatney, (802) 533-9949; Cindy Crawford, (802) 623-6934;
 Dean Conant, (802) 728-5944; Jimmy Spaulding, (802) 234-6459
 Arlene Conant, Secretary/Treasurer, (802) 728-5283

1-800-874-8897

“Serving Pennsylvania’s Finest Dairy Farms”

Services: Dairy Nutrition, Feed Programming, Management Consulting
 Custom Blended Minerals, Premix Manufacturer

Visitors always welcome! We're only 7 miles from the new Chabela's store in Hamburg and only 1 mile from the famed Hawk Mountain Sanctuary (background)

There's no substitute for personal service

"Milk Quality is Our Priority"



When the fanfare of the show is over... when the exhibits and demonstrations are out of sight... it's still your decision.

On the farm there are hundreds of decisions that must be made... and no one can make them for you. Management decision making is a lonely process.

There should be comfort in knowing that every three weeks, like clockwork, and more often if you need him, your IBA Dealer / Technician will be there to serve you on your farm... with a complete line of reliable products, and years of ON THE FARM experience.

You'll know too that whatever advice your IBA Dealer gives, he'll be back on your farm in three weeks, face-to-face, to share in the results of that advice.

That's IBA's idea of personal service.



Serving America's Dairy Farmers From Coast To Coast

WE SPECIALIZE IN:

- ProSquare/ProFlex Inflatons
- Silage and Hay Preservatives
- Probiotics and Feed Supplements
- Top Unloading Milker Claws
- Milking Accessories

- Dairy Sanitation Supplies
- Teat Dips
- Animal Health Products
- Calf Milk Replacers
- Fencing/Fencing Accessories

- Livestock Waterers
- Livestock Grooming, Hoof and Identification Products
- Pesticides and Application Equipment
- Brushes and Boots
- Udder Towels (washable and paper)

Compliments of IBA Inc. and your IBA Distributors and Dealers across the United States.

Elvin J. Gingrich • Stephen Burkholder • Jim Phillips • Ryan Spatz

IBA INC. • 27 PROVIDENCE ROAD • MILLBURY, MA 01527 • (508) 865-6911

Bulk Tank Fillers

HAYNES FARM SOLDIER BABS (VG-86)

9-03 2x 343d 29793 3.9% 1155 3.0% 907 Inc.
Lifetime to date 149,605 4.1% 6104 3.1% 4660
Her Nolan spring yearling sells at the National Convention Sale June 24!

HAYNES FARM OLY KARNIE

4-06 2x 364d 26221 4.2% 1104 3.0% 787
5-09 2x 98d 7682 4.5% 343 2.9% 223 Inc.

HAYNES FARM TRACEY

3-05 2x 360 22150 4.3% 956 3.2% 718
4-08 2x 126 9881 4.1% 408 3.0% 301 Inc.

RIDGEVIEW TRIDENT OLIVE (EX-91)

7-10 2x 289d 24215 3.8% 913 3.3% 809 Inc.

PARKERS-PRIDE MISS GREEDY

3-05 2x 328d 24215 3.8% 932 3.0% 738 Inc.
Purchased at 2004 National Convention Sale

HAYNES FARM

1436 Route 11A, Tully, NY 13159

Scott & Kelly
315.439.7777

Del & Sandy
315.696.5403

Congratulations to the Pennsylvania Ayrshire
Breeders Association for Hosting the
2005 National Convention and Sale.



Kingswood Farm

John and Alice Ennis and Family

289 Providence Road

Brooklyn, CT 06234

860-779-1513



Ephrata National Bank

www.epnb.com

ROBERT N. ZOOK
VICE PRESIDENT
AGRICULTURAL LENDING

31 East Main Street
P.O. Box 457
Ephrata, PA 17522

Phone (717) 721-5220
FAX (717) 738-1906
Toll Free 1-877-773-6605

Email: rzook@epnb.com

**Cynthia Crispin &
Richard E. Smith, Sr.**

5049 Sweppenheiser Drive,
Bloomsburg, PA 17815

**HARRY H.
BACHMAN**
AU-000033-L **AUCTIONEER**
2051 HORSESHOE PIKE
ANNVILLE, PA 17003-8850
(717) 867 1809

Licensed & Bonded

"Action By Auction"

ADAMS BROS.
GENERAL CONTRACTORS
COMMERCIAL and RESIDENTIAL
"Masonry Is Our Specialty"

148 Race Horse Drive
Jonestown, PA 17038

PH: 717-865-4941
Fax: 717-865-6272

LANCASTER DHIA

1592 Old Line Road
Manheim, PA 17545

Phone: 717-665-5960



PIONEER.
BRAND PRODUCTS

RICHARD C. KREIDER
SALES REPRESENTATIVE FOR
PIONEER® BRAND PRODUCTS
E-MAIL kreiderrc@phibred.com

1603 PRESCOTT ROAD
LEBANON, PA 17042-9173

PHONE: (717) 949-3278
CELL: (717) 821-0954



Dairy One

Darren Little
Dairy Record Services

814.353.3399 (office)
1.800.344.2697 x 615 (vm)

darren.little@dairyone.com
730 Warren Road, Ithaca, NY 14850

GC CORNERSTONE GENETICS

Building a Profitable Future for You
with Bovine Embryo Transfer

1489 Grandview Rd., Mount Joy, PA 17552
Ph. 717-653-4825 FAX 717-653-6966

LARRY J. KENNEL, DVM



RENAISSANCE NUTRITION, INC.

WITH COMPLIMENTS

RENAISSANCE NUTRITION, INC.

Address:

481 Frederick Road
P.O. Box 229
Roaring Spring, PA 16673

Phone: (800)-346-3649
Fax: (814)-793-0037
E-mail: rennut@rennut.com

Web: www.rennut.com



Join Our Family

We're Marketing Milk for Dairy Farm Families from Pennsylvania to Alabama



Maryland & Virginia
Milk Producers Cooperative Association

800-552-1976

www.mdvamilk.com

Serving our Member-Owners Since 1920!



He works. His ideas work.

Innovations in American Government Award, Ford Foundation JFK School Of Government, Harvard University
Legislator Of The Year Award, National Legislators Association



Best Wishes

from Senator
David J. Brightbill

Senate's Majority Leader



District Office Telephone:
1.800.222.1897

48th District:
Berks, Chester, Dauphin,
Lancaster and Lebanon
Counties

Farm - Agri - Business
Life - Homeowners - Auto



DOUGLAS C. WALICK INSURANCE

FARM, HEALTH, LIFE, HOMEOWNERS, AUTO
LONG TERM CARE

Home/Office
(717) 763-8299

Fax (717) 763-1771

For more information please contact:



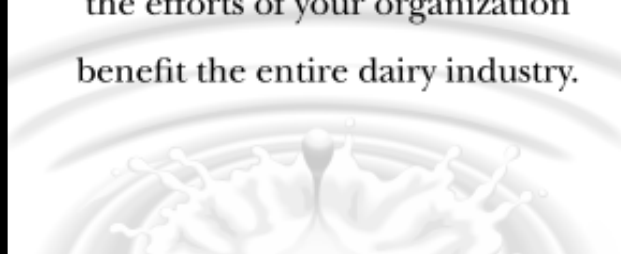
American Farm Products

300 N. Huron, Ypsilanti, MI 48197
(734) 484-4180



DAIRY FARMERS of AMERICA

The members of Dairy Farmers of America congratulate the National Ayrshire Breeders Association on a successful 2005 convention. Like a single drop of milk affects the entire pool, the efforts of your organization benefit the entire dairy industry.



Good-Value Ayr Farms

Mike & Linda Hanson & Family

35400 State Hwy 1 NE

Goodridge, MN 56726



Quality
Nutrition
People
ForFlex[®] 2.0



Blue Seal's latest dairy innovation is **ForFlex™ 2.0**, a software system that develops a total ration for the herd or herd groups; designs a custom formulated feed to supplement existing forages; and electronically sends the formula directly to the mill for manufacture and delivery.

ForFlex™ 2.0 custom formulated feeds are producing high milk production for many of today's leading dairy producers.

**Put ForFlex™ 2.0 to Work for You!
Call Us Today!**

Blue Seal Feeds, Inc. Plant Locations:

Arcade, NY (800) 648-1450 • Augusta, ME (800) 734-1945 • Bainbridge, NY (800) 451-9863 • Bow, NH (800) 660-3302 (inside NH) or (800) 343-0530 (outside NH) • Brandon, VT (800) 766-6391 • Chatham, NY (800) 333-3861 • Hagerstown, MD (800) 845-5413 • Richford, VT (800) 649-5096 (inside VT) or (800) 451-3200 (outside VT) • Watertown, NY (800) 962-8991

www.bluesealdairy.com
Weather - Futures - Market News
Make Us Your Home Page!

- ❖ Flaked Toasted Corn
- ❖ Ground Toasted Corn
- ❖ Flaked Toasted Soybeans
- ❖ Ground Toasted Soybeans
- ❖ Customer Grain Bank



220 White Oak Road,
New Holland, PA
717-355-2326

Wisconsin Ayrshire Club

Bill Kolaske, President

John Offer, Vice President

Tory Voskuil, Secretary/Treasurer
N4460 McCabe Road
Kaukauna, WI 54130

Morrissey Insurance Farmowner's Coverage

*Specializing in meeting YOUR insurance needs,
structuring a policy to meet your standards,
while educating you on coverage concerns!*

Contact: Morrissey Insurance
890 North Reading Road
Ephrata, PA 17522

800-422-8335 Main Office
877-422-8335 Northern Tier Office
www.insuringyourfuture.com

Serving the agricultural community for over 30 years.

LITZENBERG FARMS

Registered Ayrshires Since 1957

"Proud of Our Homebred Champions"

LITZENBERG CAVALIER O-KATE

Champion Nat'l Ayrshire Spring Show 1990
Champion OSF Jr. Show 1991
Champion Ohio State Fair 1992

LITZENBERG LIBERATOR BOBBIE

Champion OSF Jr. Show 1989

LITZENBERG LIBERATOR PEPPER

Res. Champion OSF Jr. Show 1991

LITZENBERG YAN BOUNCE

Res. Champion OSF Jr. Show 2001

LITZENBERG HELIGO DIXIE

Champion OSF Jr. Show 2002
HM Champion Ohio State Fair 2002
HM Champion OSF Jr. Show 2003

**Look for Litzenberg Laro Baguette
in the 2005 PA Convention Sale.**

*This is your rare opportunity to purchase a descendant of
our original herd and 48 years of "Litzenberg" breeding.*

Richard Litzenberg Family
Centerburg, Ohio
740-625-5366

GETTING COWS PREGNANT...



It involves more than just a straw of semen.

It is also every person that stands behind that straw of semen—from the person that collected it to the Accelerated Genetics representative that delivered it.

It takes commitment. Accelerated Genetics is committed to providing you with outstanding service and a quality product.

It takes a team. Accelerated Genetics representatives can help you every step of the way, assisting with estrus detection, mating, and breeding.

It takes a phone call. Your local Accelerated Genetics team member is only a phone call away and will be happy to assist you with your herd's reproductive needs.

Innovation Breeds Excellence®

Accelerated Genetics®



Contact your local representative or call...

800.451.9275

www.accelgen.com • info@accelgen.com



**Taurus – Your source for
“Profitable Genetics”!**

Taurus Service Inc.

P.O.Box 164, Mehoopany, PA 18629

Phone 570-833-5123 - 570-833-5513

Fax 570-833-2690

Toll Free U.S. Orders 1-800-836-5123

taurus@epix.net

www.taurus-service.com

**ANNVILLE - CLEONA
VETERINARY ASSOCIATES, INC**

HEALTHCARE FOR DOGS, CATS AND FARM ANIMALS



BRUCE KECK, V.M.D.
ALYSIA DEAVEN, V.M.D.
TRACY SANDS, D.V.M.

1259 E. MAIN STREET
ANNVILLE, PA 17003

OFFICE: (717) 867-2662

FAX: (717) 867-0396



HOSTETTER
Sales & Service, Inc.

DAIRY FARM EQUIPMENT

1528 NORTH ROUTE 934
ANNVILLE, PENNSYLVANIA 17003



(717) 867-2896
FAX (717) 867-5636
ASK FOR ROD OR STEVE



Select Sire Power
is pleased to
support the
2005 National
Ayrshire Convention

**Welcome to Maulfair Acres
Ayrshires!**

Hope you enjoy your stay in
Pennsylvania.



Maulfair Acres
Dale, Pattie, Daryl, Jennie & David
400 South Center Street,
Jonestown, PA
717-865-6439

Qualified Service Technicians
with Farming or Electrical Background

**Are You Earning
\$59,000 – \$74,000+?**

- Medical insurance
- Emergency work pays double
- Paid vacation
- Paid driving time
- Company truck



Manheim, Myerstown, Reading, Quarryville, and York
Toll Free (866) 665-3525

LEADING SIRES



Shady Walnut **CONN EX**

200AY0102 aAa: 456321 DMS: 345 Corey x Cornelius



- Exceptional Udders
- Lots of Style
- Calving Ease Sire
- Sire of Sons

Benchmark Hybrid GP #2 2Y8-CAN
Holt & Doug 1979, Keweenaw, Ontario, Canada

Visserdale **DILLIGENT GP**

200AY0308 aAa: 234156 DMS: - Dropstad x Patrick



- Great Body Capacity
- Dairy Character Specialist
- Calving Ease Sire
- Sire of Sons

St. Patrick Liberty VE-85-2Y8-CAN
Farms S.A.P. Leduc, S.S.P.C., Sherbrooke, Quebec, Canada

SEMEX DELIVERS

1-800-303-2855

info@semexusa.com www.semexusa.com



Welcome to Pennsylvania!

Come and have a relaxing time and enjoy some fellowship with other Ayrshire breeders.

We are looking forward to celebrating the Ayrshire cow that provides our livelihood.



Wentworth Farm Ayrshires

Rob & Bonnie Wentworth
Hannah, Ethan, Oliver & Noah
1026 River Road, Quarryville, PA 17566
717-548-3896 • went@epix.net

TAKE CHARGE

with energy and tonnage for your dairy

See your Pioneer sales representative for:

Pioneer® brand corn hybrids designated as Proven Highly Digestible (PHD)

Pioneer® brand inoculants to preserve more of your valuable forages

Pioneer® brand alfalfa varieties

www.pioneer.com/growingpoint



PIONEER
A DUPONT COMPANY

Pioneer® brand products are provided subject to the terms and conditions of purchase which are part of the labeling and purchase documents. ®, SM, TM Trademarks and service marks of Pioneer Hi-Bred International, Inc. © 2005 PHIL.



The Pennsylvania Ayrshire Breeders Association wants to thank all the Ayrshire Breeders and friends that have attended the 130th National Ayrshire Convention.

We sincerely wish that you have enjoyed your time in Pennsylvania.



The PA Department of Agriculture Welcomes You to Pennsylvania.

CENTER FOR
Dairy EXCELLENCE

*An Initiative of the
Department of Agriculture*

PA's Dairy Industry

Represents 42% of PA's
ag economy

Generates \$1.7 billion in
cash receipts and
\$4.2 billion in local
economic impact

Produces 10.3 billion
pounds of milk

Home to 9,000 dairy
farm families and
560,000 dairy cows

- Created to ensure a competitive and profitable dairy industry
- Helps producers improve performance, better utilize inputs and increase profits
- Implements "Profit Team" dairy management assistance program
- Serves as "dairy resource" for PA's Dept of Ag
- Coordinates PDA dairy related programs and services
- Communicates dairy industry messages to farm and non-farm audiences
- Works through the help of 90 industry supporters and producers

For more information, contact Gary Heckman at 717-346-0849 or c-heckman@state.pa.us.



Best wishes on a successful and enjoyable convention.

Dennis C Wolff, Secretary of Agriculture

Pennsylvania Department of
AGRICULTURE



Welcome to Pennsylvania!
We are honored to have you
as our guests.

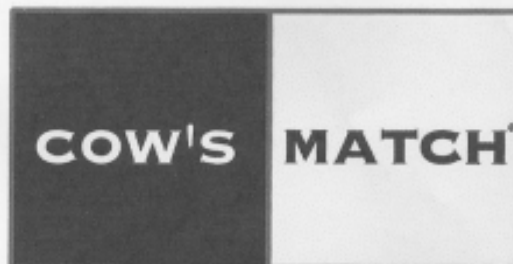


Crown Quest Ayrshires

Shawn, Karen, Merritt, Amber &
Miranda Hernley

31 Hernley Lane, Lebanon, PA
717-865-5782

Ayrshire's Reach Their Genetic Growth Potential with



CALF GROWTH FORMULA

Visit www.cowsmatch.com or call 800-618-6455 for more information.

FARM INSURANCE

We're On Your Side with
Farm Insurance.

For more information on insuring your farm with
Nationwide's Farm Package policy, call me...
Stop by... Log on — it's your choice!



Kathy Barry
24 N 3rd Street
Womelsdorf, PA 19567
610-589-4291



Nationwide*
Agribusiness



Nationwide Mutual Insurance Company and Affiliated Companies, Home Office:
Columbus, OH 43215-2220 HQB-14/03



Genex Cooperative, Inc.

670 Overly Grove Road,

New Holland, PA 17557

(717) 354-8915



Iowa State Ayrshire Club

Look for the Iowa consignments at the 2005 National Ayrshire Sale!

P&A Ayrshires – Super Wilton March calf. Dam: Covey Farms Retrace Rae,
2004 Reserve All American
And a fancy Spring Yearling. Dam: P&A Jackpot Hello (EX-90)

Sharward Farm – Fall Calf by Masterpiece. Trident dam with 3-01 365d 28297M

Zumbach Farms – Fancy Junior 2-yr. old – Zumbach-Farms Spirit's Stella
Due 9/05, from a strong producing family.

Kar-Ayr Farm – Pick of Flush from Judith x Wilson. Contracted to Semex.
Reba is a third generation All-American.

Swiss Premium Dairy

2401 Walnut Street
Lebanon, PA 17042
Phone: (717) 273-2658

Special thanks to Wengerts Dairy for the drinks they provided in our hospitality room!

Hy-Point Dairy
425 Beaver Valley Road
Wilmington, Delaware 19803

Serving all of your
agriculture needs!



274.6906 or 1.800.214.1222
lvfb.com fultonbank.com

Member FDIC

Rumensin gives you more milk per pound of feed.

More milk per pound of feed

Research shows Rumensin-fed cows produce more milk per pound of feed. And, dry matter intake doesn't change when cows are in negative energy balance—they simply convert nutrients to milk more efficiently.

Less feed per pound of milk

Feeding Rumensin helps cows maintain production with less feed, thus increasing milk-productive efficiency. Plus, your dry cows finish strong by getting the most out of their feed with Rumensin.



ELANCO
Rumensin
Right from the start.™

Rumensin is a trademark for Elanco Animal Health. © 2005 Elanco Animal Health. *Production of metabolites within rumen will be used as feed value.

A PROMISING BRED HEIFER TO THE 2005 NATIONAL SALE!

TOLL GATE BBBK DAISY

Born 8/2/03, due to calve in October to Royalcroft Brendan

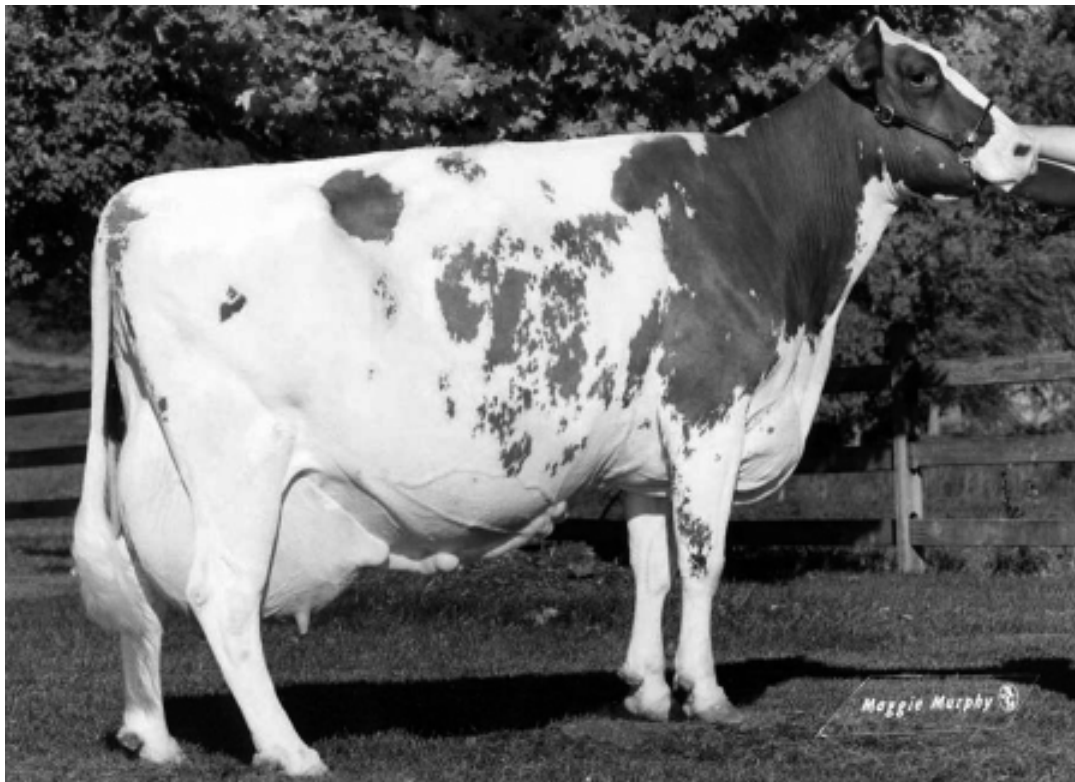
Sire: Blackaddar BB Kellogg

Dam: Toll Gate Olympic 2 Daffodil VG 87 as a 3 year old

2-04 2X 305d 19,848 lbs. 4.0% 786 2.9% 567

3-04 2X 226d 16,168 lbs. 4.0% 654 2.8% 456 inc.

projected to 23,452 lbs



Daisy's 4th Dam: **Toll Gate Mozart's Dana 2E 92** (pictured above at 10 years old)

5-01 2X 305 23,340 4.0 929 3.1 735

lifetime production: 147,090 lbs. Milk

2nd Dam: Toll Gate Modelman's Daphne (not scored) 3rd Dam: Toll Gate Festival's Dolly VG 87

4-10 2X 305d 18,850 4.2 789 3.2 595

2-04 2X 305d 17,633 4.1 730 569 3.2

4th Dam: Toll Gate Mozart's Dana 2E 92 (pictured above at 10 years old)

5th Dam: Englan Royal Dolly EX 90

6th Dam: Pleasant View Dollie EX 91

A Kellogg daughter with up to 6 generations of great type scores (87, NC, 87, 92, 90 and 91) and solid milk production records, how can you go wrong?

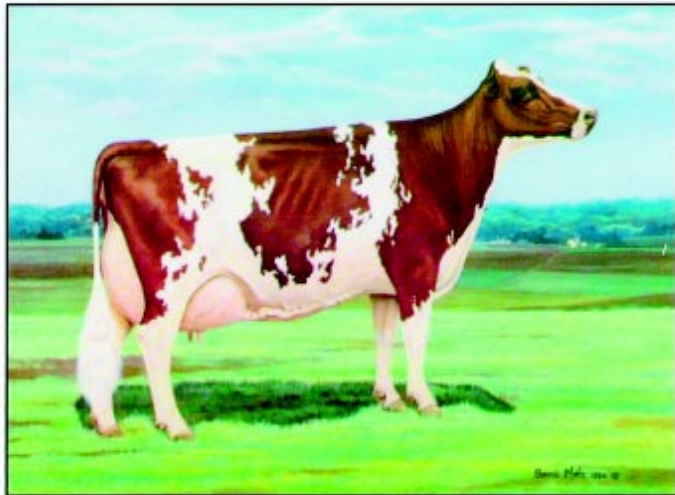
William Preston Davenport
Toll Gate Farm
62 Chestnut Hill Road
Litchfield, CT 06759
(860) 567-4745



Congratulations

Pennsylvania Ayrshire Breeders Association

Welcome 2005 National Convention Attendee's



Cargill Animal Nutrition provides customized animal productivity solutions to commercial producers across the Americas, Europe, and Asia. Rather than focusing on standardized nutrition products, we create customized ingredient blends and management programs to fit each situation. Our research-proven management and nutrition technologies suit the specific needs of our diverse array of customers. And our animal nutrition and management experts offer the scope and creativity to serve the unique needs of each customer.

Cargill[™]
Animal Nutrition

www.cargillanimalnutrition.com

Cargill Animal Nutrition
Mid-Atlantic District Office
512 West King Street
Shippensburg, PA 17257

STARS SHINE BRIGHTER IN HARRISBURG

Ultimate Experience for Ayrshire Youth & Families in 2005

Supreme Champion

Open Show

\$3,000

Cargill Animal Nutrition

Ayrshire Grand Champion

Open Show

\$1,000

Pennfield Dairy Feed Technologies



Supreme Champion

Junior Show

\$2,000

AgChoice Farm Credit

Ayrshire Grand Champion

Junior Show

\$1,000 Savings Bond

Pfizer Animal Health

2003 Junior Grand Champion Owned by Andrew Evans

Sunny Acres Proly Jem

2003 Open Grand Champion owned by Patrick Family

Maple Dell Trident Song

★ FREE Admission

★ Chance to Win Over \$5,400 with One Entry

★ FREE Parking

Premier National Junior Ayrshire Show
Monday, September 19, 2005

All-American Dairy Show
September 16-22, 2005



Farm Show Complex, Harrisburg, PA 717.787.2905 aads@state.pa.us www.allamerican.state.pa.us