



The Complete Cow

2006 LEADING RECORDS FOR AGED COWS

10 YEARS & OLDER

SHARWARDS HELIGO IMAGE
10-00 305D 27,523 ECM (12,484kg)
Darryl Keehner, IA

CONEBELLA LUKE'S GERANIUM
10-03 305D 27,090 ECM (12,288kg)
Donald Gable, PA

CONEBELLA SARGENT'S RAZZLE
11-01 305D 26,805 ECM (12,159 kg)
Donald Gable, PA

RIPPLING-BROOK KELLY MISSY 2
10-00 305D 25,871 ECM (11,735 kg)
Douglas Varner, PA

HONEY DEW CAVALIER KIM
13-00 305D 23,246 ECM (10,544 kg)
Steve Offer, WI

CROCUS WAY MM POLLY
13-00 305D 22,011 ECM (9,984 kg)
Daniel Hoppaugh, PA

COVEY-FARMS REBATE
12-06 305D 21,963 ECM (9,962 kg)
Amy Covey Conkling, OK

STARLIGHT HELIGO SUNSHINE
10-04 305D 21,931 ECM (9,948 kg)
Denise & Wayne Brunzman, IA

SHARWARDS NED GRAMMY
10-06 305D 21,256 ECM (9,642 kg)
Darryl Keehner, IA

WILSHORE BB HIGHWAY 201
10-00 305D 20,863 ECM (9,463 kg)
Wilshore Farm, Inc., ME

5 - 10 YEAR OLDS

AYRDELL'S SAVAGE JANET
5-07 305D 38,921 ECM (17,654 kg)
Neil, Drew & Rachel Duncan, OH

AMES TRIDENT RUTHY
5-02 305D 31,983 ECM (14,507 kg)
Andrew & Leah Busch, IA

SMOKY-HILL WANDRINGEYE BETTY
6-09 305D 31,375 ECM (14,232 kg)
P&A Ayrshires, IA

HAWKSFIELD SHARON BUDROSE
9-01 305D 31,204 ECM (14,154 kg)
Charles Sayles, MI

PALMYRA LIMESTONE BLUSH
5-06 305D 31,060 ECM (14,089 kg)
Palmyra Ayrshires, MD

SHARWARDS CORNELIUS DANDY
7-00 305D 30,219 ECM (13,707 kg)
Darryl Keehner, IA

HEIMS SAILOR VANESSA
6-06 305D 29,454 ECM (13,360 kg)
James D Jr. & Judy Heims, IA

CONEBELLA REWARD'S STARLIGHT
7-03 305D 29,196 ECM (13,243 kg)
Donald Gable, PA

PALMYRA RECRUITER'S CHARMING
5-01 305D 29,171 ECM (13,232 kg)
Palmyra Ayrshires, MD

HAWKSFIELD BROCK MONA CHERISH
6-11 305D 29,112 ECM (13,205 kg)
Charles Sayles, MI

Longevity

Somatic Cell Comparison

<u>Breed</u>	<u>Score</u>
AYRSHIRE	2.71
Holstein	2.77
Brown Swiss	2.79
Milking Shorthorn	2.86
Jersey	3.08
Guernsey	3.27

Source AIPL August 2007

Productive Life Comparison

<u>Breed</u>	<u>Months</u>
AYRSHIRE	30.26
Jersey	32.43
Milking Shorthorn	30.22
Brown Swiss	29.26
Holstein	28.57
Guernsey	26.35

Source AIPL August 2007



PALMYRA LIMESTONE BLUSH

Excellent-90 @ 7-00, Elite Cow

Lifetime to date:

109,770M (49,791kg)

3.9% 4250F (1928kg)

3.3% 3618P (1641kg)



COVEY-FARMS RETRACE RAE

Excellent-94 @ 8-02

Lifetime to date:

138,090M (62,637kg)

3.9% 5442F (2468kg)

2.8% 3884P (1762kg)

All-American 5-Year-Old, 2003

Reserve All-American Aged Cow, 2004

Sons in A.I.



HAWKSFIELD BRONARA-ET

Excellent-94 4E @ 12-02, Elite Cow

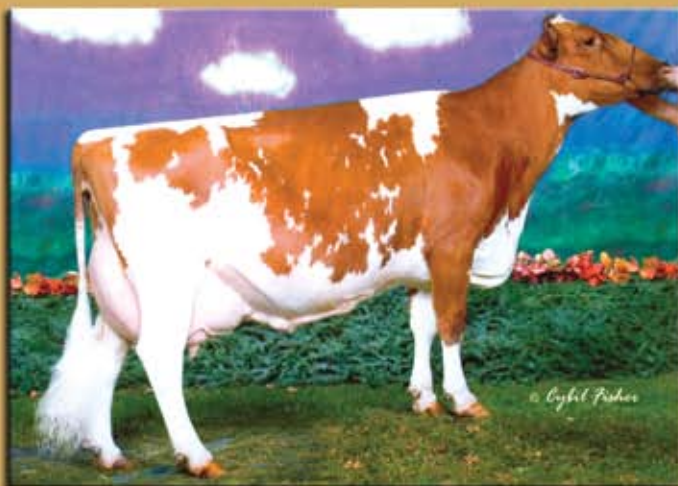
Lifetime to date:

200,000M (90,719kg)

4.1% 8200F (3719kg)

3.2% 6400P (2903kg)

Son in A.I.



PLUM-BOTTOM TRIDENT'S PARIS

Excellent-95 @ 10-08

Lifetime to date:

116,060M (52,644kg)

3.9% 4555F (2066kg)

3.1% 3632P (1647kg)

Reserve All-American Aged Cow, 2003

Unanimous All-American Aged Cow, 2004

Modern Matriarchs



Dam:
GALNEY-EPC L.H. ROSY-ET
 Excellent-90 @ 3-09
 4-06 365D 32,980M (14,960kg)
 3.8% 1238F (562kg) 3.1% 1014P (460kg)
 All-American Fall Yearling-In-Milk, 2001
 Sons in A.I.



Daughter
PALMYRA ROMEO ROSY-ET
 Very Good-89 @ 3-00
 2-03 341D 23,860M (10,823kg)
 4.2% 1013F (460kg) 3.3% 784P (356kg)
 Nom. All-American Sr. 2-Year-Old, 2006



Calving Interval Comparison

<u>BREED</u>	<u>MONTHS</u>
AYRSHIRE	14.2
Jersey	13.7
Holstein	14.2
Milking Shorthorn	14.0
Guernsey	14.7
Brown Swiss	15.1

Source Sept. 2007 DRMS Dairy Metrics Report

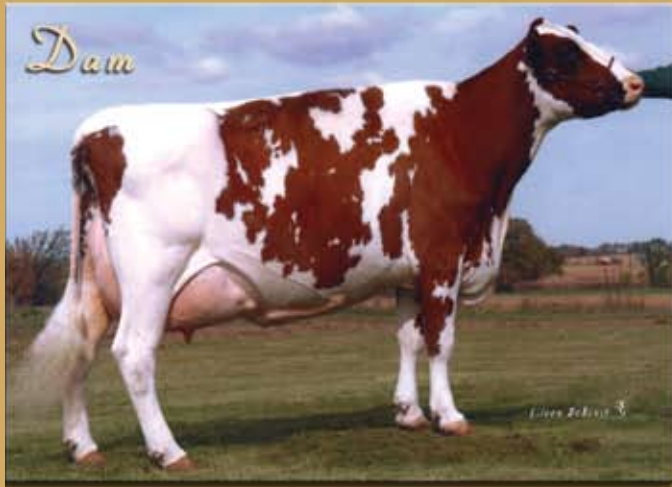
Mastitis Culling Comparison

<u>BREED</u>	<u>% CULLED</u>
AYRSHIRE	2.4
Jersey	4.5
Guernsey	4.6
Brown Swiss	4.6
Holstein	7.1
Milking Shorthorn	7.8

Source Sept. 2007 DRMS Dairy Metrics Report

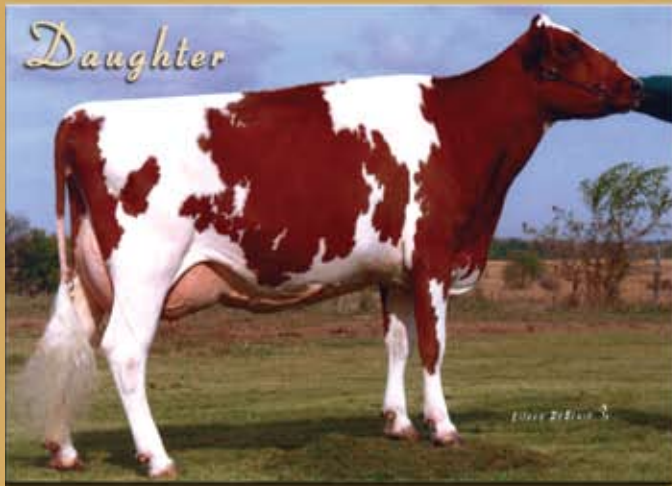
Repeatability

Dam



FAMILY-AF-AYR DK DESIREE
Excellent-92 @ 5-02
6-11 365D 22,680M (10,288kg)
3.8% 851F (386kg) 3.0% 677P (307kg)
All-American 5-Year-Old, 2002

Daughter



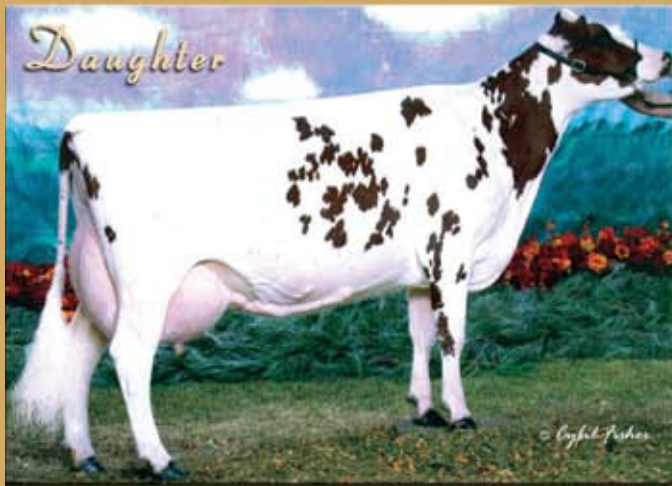
FAMILY-AF-AYR CORNELIUS DAISY
Excellent-93 @ 6-08
5-07 318D 20,770M (9421kg)
4.3% 894F (406kg) 3.3% 684P (310kg)
Reserve All-American Sr. 2-Year-Old, 2002
All-American Sr. 3-Year-Old, 2003
Reserve All-American 4-Year-Old, 2004

Dam



WALETZKO'S TRIDENT IRIS
Excellent-92 2E @ 7-08
4-06 365D 34,550M (15672kg)
3.7% 1276F (579kg) 3.0% 1035P (469kg)
Nominated All-American Aged Cow, 2002

Daughter



STILLMORE BBBK INSPIRE
Excellent-90 @ 5-09
4-03 365D 27,750M (12,587kg)
3.6% 997F (452kg) 3.2% 878P (398kg)
All-American Jr. 2-Year-Old, 2003

Generation After Generation

Show & Production Appeal



VALEVUE BBK MINERVA
Excellent-94 @ 4-03
3-01 305D 30,030M (13,622kg)
5.5% 1644F (746kg) 3.3% 984P (446kg)
Grand Champion, 2005 & 2006 Central
National Show at World Dairy Expo
All-American 3-Year-Old, 2005
Unanimous All-American 4-Year-Old, 2006



MAPLE-DELL ZORRO DAFORT
Excellent-94 @ 4-10, Elite Cow
3-00 310D 22,000M (9,980kg)
4.0% 871F (395kg) 3.1% 682P (309kg)
Grand Champion, 2006 Mid-Atlantic
National Show at All-American Dairy Show
Reserve All-American 3-Year-Old, 2006
Reserve All-American 4-Year-Old, 2007



COTTRELL'S KUSMAR NATTIE
3-10 362D 29,670M (13,458kg)
3.3% 982F (445kg) 3.0% 888P (403kg)
Reserve All-American 5-Year-Old, 2006



SKI-PAL LOT KALLY
Excellent-93 @ 4-01
3-09 322D 25,350M (11,499kg)
3.2% 818F (371kg) 3.3% 845P (383kg)
All-American Sr. 3-Year-Old, 2006



COVEY-FARMS FLINT ROVANNA
Very Good-89 @ 2-10
2-05 365D 31,030M (14,075kg)
3.7% 1151F (522kg) 3.2% 991P (450kg)
Reserve All-American Sr. 2-Year-Old, 2006



AGAWAM RIPKEN WILLIE
Very Good-88 @ 2-02
2-00 365D 20,301M (9,208kg)
4.5% 893F (405kg) 3.2% 626P (284kg)
HM All-American Jr. 2-Year-Old, 2006



PINEVILLE-FARM KATE
Very Good-86 @ 2-10
3-06 Proj. 305D 21,051M (9,549kg)
3.5% 741F (336kg) 3.0% 601P (273kg)



LITZENBERG LARO PUDDIN
Very Good-88 @ 2-07
2-06 365D 33,630M (15,255kg)
4.6% 1532F (695kg) 3.1% 1036P (470kg)
Nom. All-American Sr. 2-Year-Old, 2006

Impressive Young Cows

Profit Makers



PALMYRA JERRY BETHANY

Excellent-90 @ 3-05
 3-05 305D Proj. 31,220M (14,161kg)
 4.2% 1311F (595kg) 3.3% 1030P (467kg)
 #1 Elite Cow, August 2007
 Sons in A.I.
 Jr. All-American Jr. 3-Year-Old, 2006

* All Records are True Protein *

Days Open Comparison

Breed	Days Open
AYRSHIRE	146.3
Jersey	143.1
Milking Shorthorn	159.3
Holstein	163.4
Guernsey	170.7
Brown Swiss	185.0

Source Sept. 2007 DRMS Dairy Metrics Report

Reproductive Culling Comparison

Breed	% Culled
AYRSHIRE	6.2
Brown Swiss	7.9
Guernsey	8.3
Milking Shorthorn	8.6
Holstein	9.9

Source Sept. 2007 DRMS Dairy Metrics Report

Services Per Pregnancy Comparison

Breed	Services
AYRSHIRE	2.8
Holstein	2.9
Guernsey	3.5
Brown Swiss	3.5

Source Sept. 2007 DRMS Dairy Metrics Report

Ideal for Cross Breeding



A member of the U.S. Livestock Genetics Export
 1224 Alton Darby Creek Rd., Suite B, Columbus, OH USA 43228
 Ph: 614.335.0020 ~ Fax: 614.335.0023 ~ www.usayrshire.com